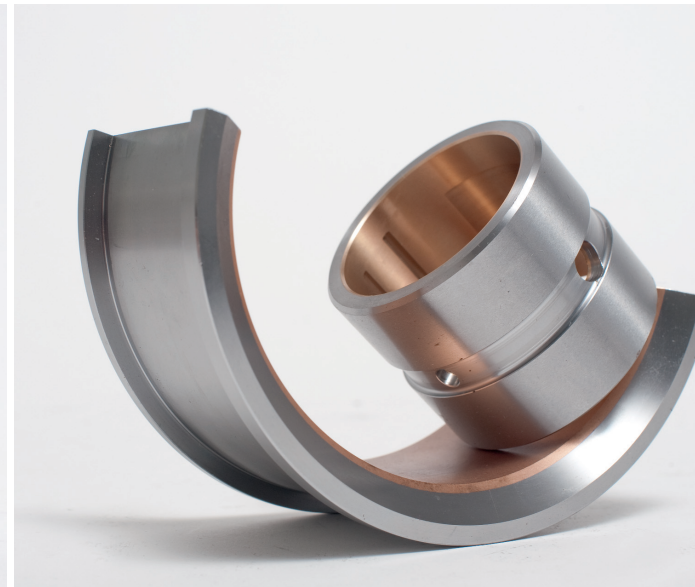


Gleitlager und Metallverarbeitung GmbH Osterwieck



Hydrodynamic plain bearings with a high degree of reliability

Plain bearing out of centrifugal compound cast iron

Various materials are available for the production of bearings within the centrifugal composite cast iron with which various types of bearings can be produced.

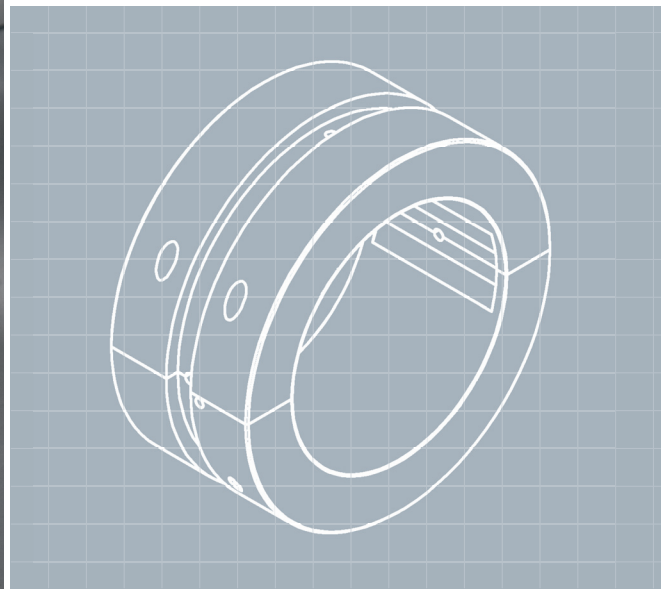
MATERIALS

- steel / lead bronze
- steel / white alloy
- steel / lead bronze / white alloy
- steel / lead bronze / galvanic
- bronze / white alloy

TYPES OF BEARINGS

- half-shells with / without collar
- bearing bushes with / without collar
- thrust bushings separated / unseparated
- special bearings
- sliding segments





Composite bearings for crank drives (pumps, compressors), gears and plan engineering

Plain bearing out of centrifugal compound cast iron

Internal manufacturing of the compound by means of heating by a gas-oxygen mixture (bearing bronze) or by centrifugal casting process (white alloy).

Further processing by means of modern CNC turning and milling technology in compliance with the quality safety system of ISO 9001/14001.

CHARACTERISTICS

- high load-carrying capacity
- low friction
- long service life
- excellent emergency running properties
- high smooth running of the product (low vibration)

Contact

Gleitlager und Metallverarbeitung GmbH Osterwieck | Ziegeleiweg 3 | 38835 Osterwieck
Phone: +49(0) 39421/61970 | Fax: +49(0) 39421/6197-130 | Email: info@gmo-gleitlager.de

